

Remote Access through Painsley @ Home

July / August 2015

As you are aware the network is undergoing a major upgrade. As a result of this the Painsley @ Home system will be changing too.

You will still access it from the Painsley website link but the way it looks when you login will be different.

We will be sending a text message to let you know when it is ready to access. When this happens you will need to use your new username and password. This was sent to you in the same email as this guide.

Please make sure that you have got your new username and password with you before you leave on Friday 17th July.

Accessing Painsley @ Home Using Internet Explorer



1. Either go to the [Painsley website](#) or directly to the [Painsley @ Home login Page](#)
2. You will be taken to the new login page (shown below). **You must enter your new username and password. The username must be entered with PCA-PAINSLY\ before it as demonstrated in the image.**

When ready **select the sign in button.**

RD Web Access

Painsley Catholic College
RemoteApp and Desktop Connection

Help

Domain\user name: PCA-PAINSLY\YOUR_USERNAME
Password: ●●●●●●

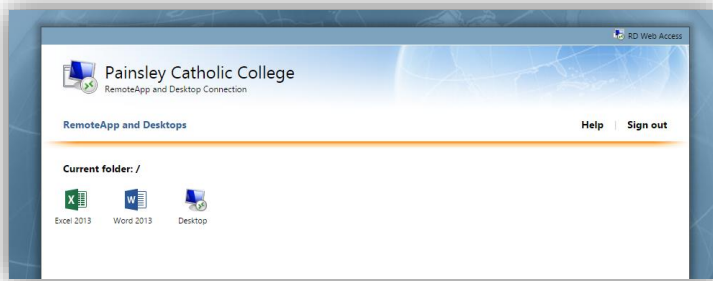
Security ([show explanation](#))
 This is a public or shared computer
 This is a private computer

Sign in

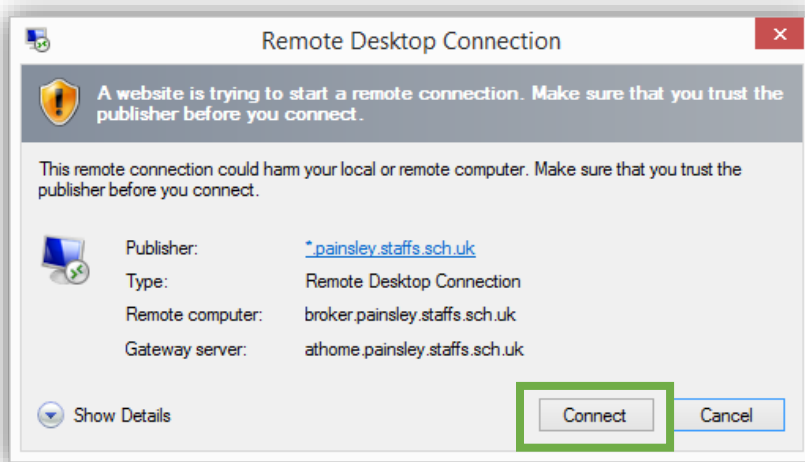
To protect against unauthorized access, your RD Web Access session will automatically time out after a period of inactivity. If your session ends, refresh your browser and sign in again.

Windows Server 2012 R2 Microsoft

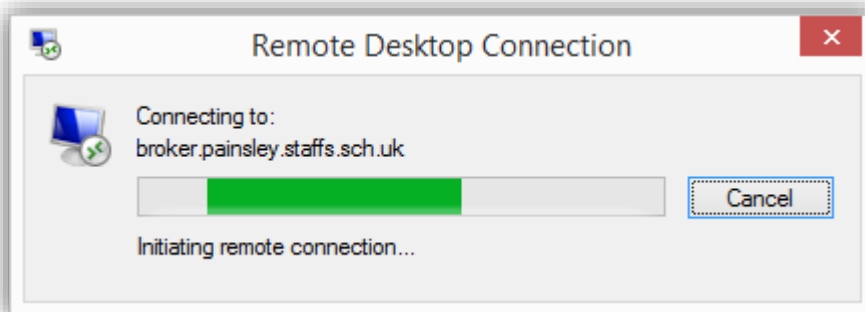
3. Select the application that you want or to view a full desktop that has all programs from the options shown.



4. When you see the box shown below **select the connect button**.



5. Your Painsley @ Home desktop or program will start to connect and then open.



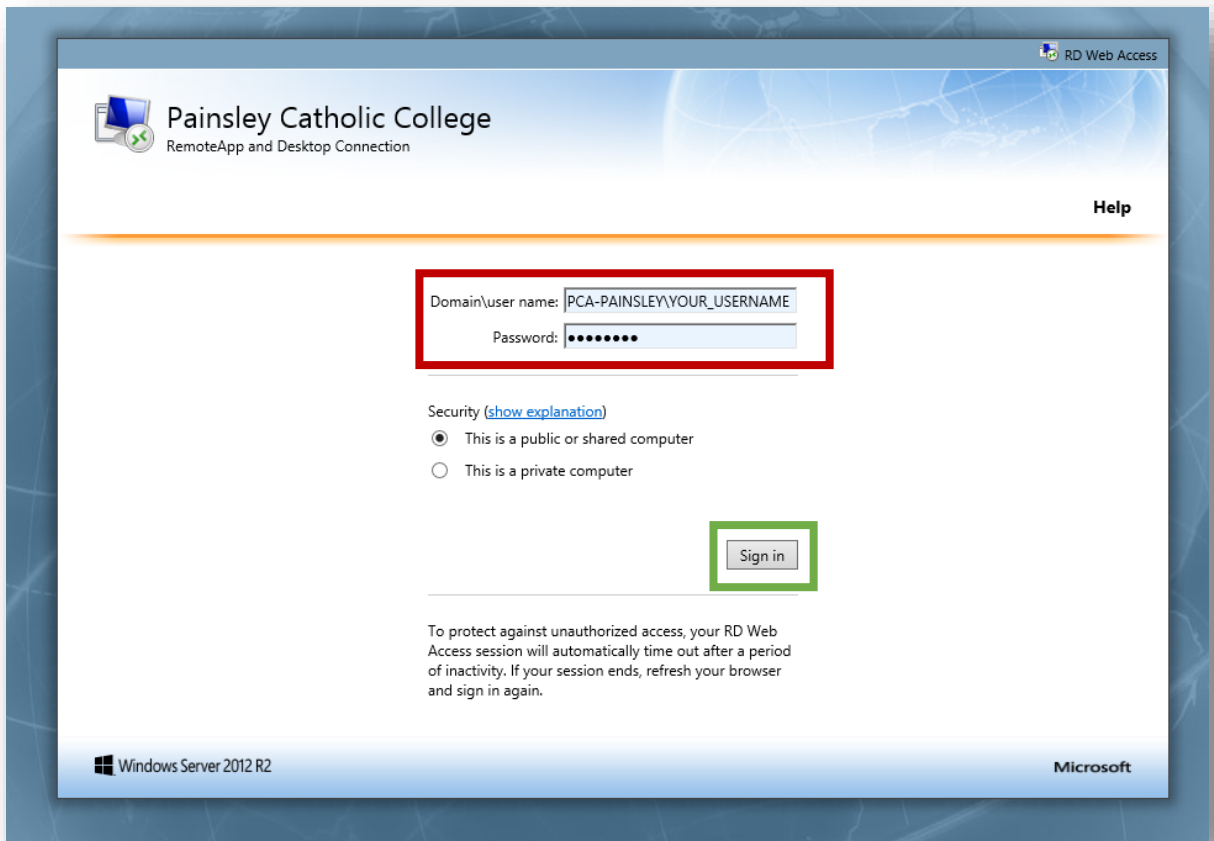
If you are going to use Internet Explorer then the above is all you need to know. Read on for instructions on using other browsers.

Instructions for Other Browsers

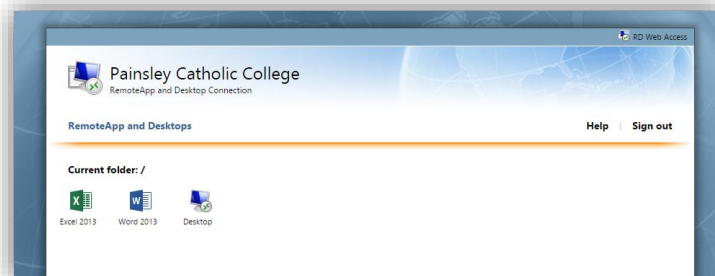


1. Either go to the [Painsley website](#) or directly to the [Painsley @ Home login Page](#)
2. You will be taken to the new login page (shown below). **You must enter your new username and password. The username must be entered with PCA-PAINSLEY\ before it as demonstrated in the image.**

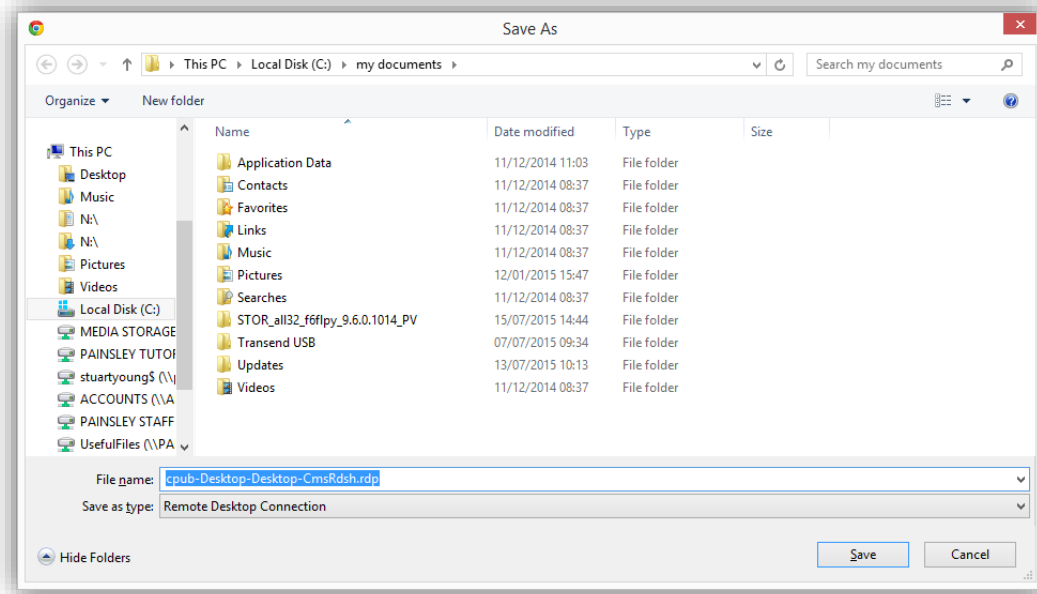
When ready **select the sign in button.**



3. Select the application that you want or to view a full desktop that has all programs from the options shown.

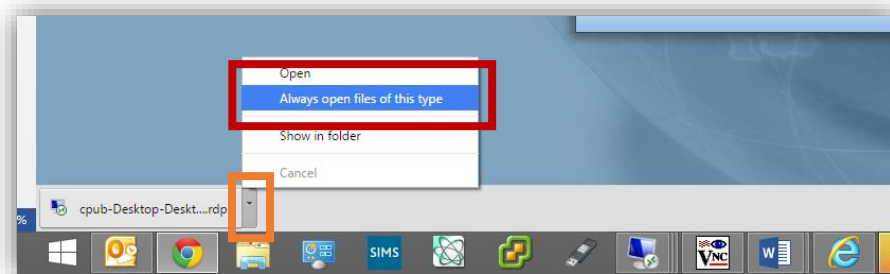


4. When asked save the file to your preferred downloads folder

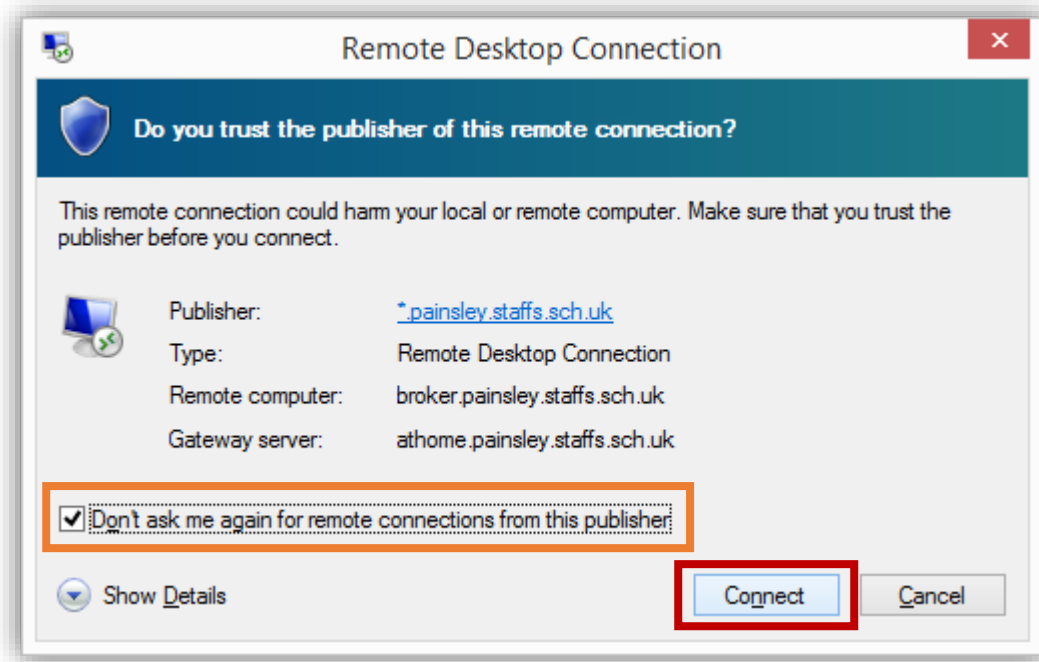


5. If using Google Chrome **select the small arrow next to the file you have just downloaded then the always open files of this type option.**

From now on you will not have to complete this step go to step 6



6. Select the **don't ask me again option** and **then the connect button.**



7. Your Painsley @ Home desktop or program will start to connect and then open.

